



SOLDER WIRE SPOOL FITMENT GUIDE

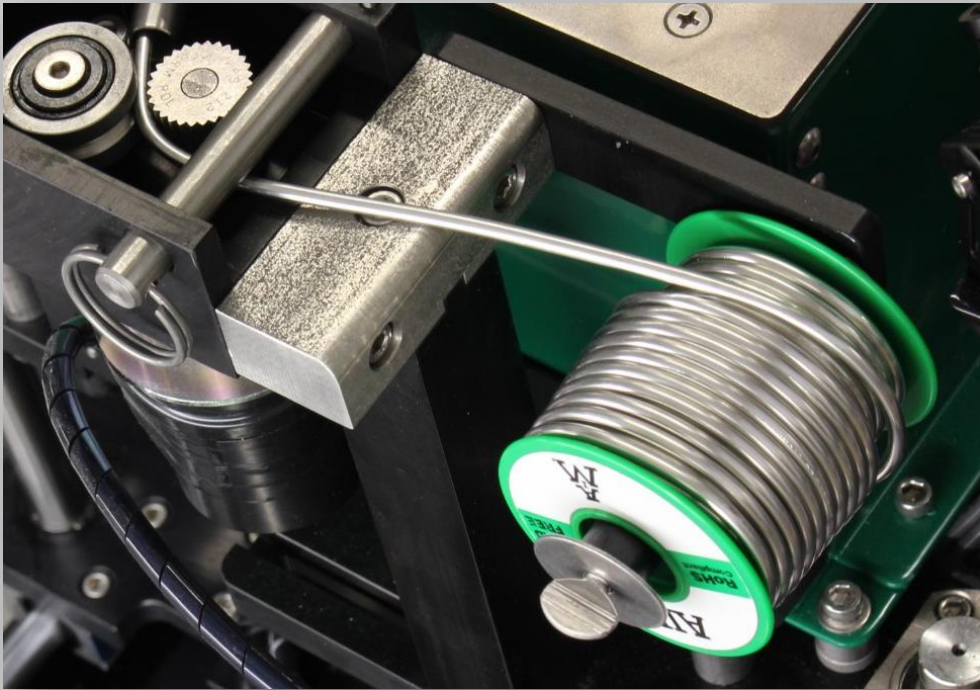
TABLE OF CONTENTS

▪ ACE NORDSON	<u>3</u>
▪ ATF	<u>4</u>
▪ EBSO	5
▪ ERSA	6
▪ JUKI	7
▪ PILLERHOUSE	8
▪ SEHO	9
▪ VITRONICS	10





ACE NORDSON 0.125 OR 3MM WIRE



AIM PART NUMBERS 1LB SPOOL:

- ❑ SN100C: 5340
- ❑ SAC305: 5206
- ❑ SN63: 5026
- ❑ REL61: 84379





ATF 3MM WIRE



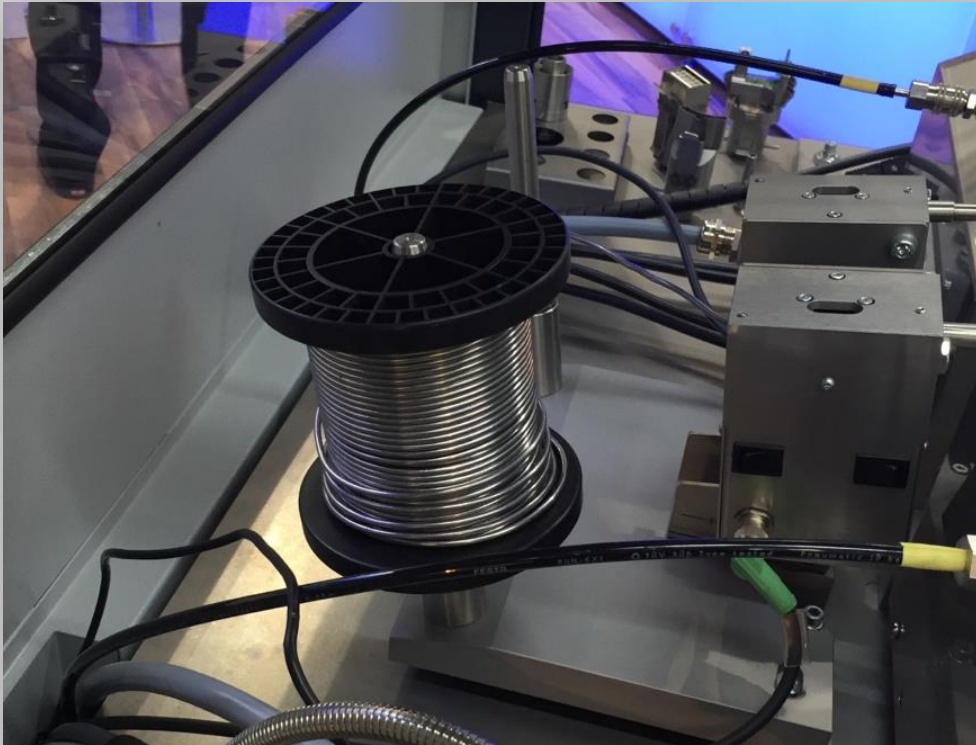
AIM PART NUMBERS 4KG SPOOL:

- SN100C: 84274
- SAC305: 84275
- SN63: 4789
- REL61: 84332
- REL22: 84333





EBSO 3MM WIRE *ONLY*



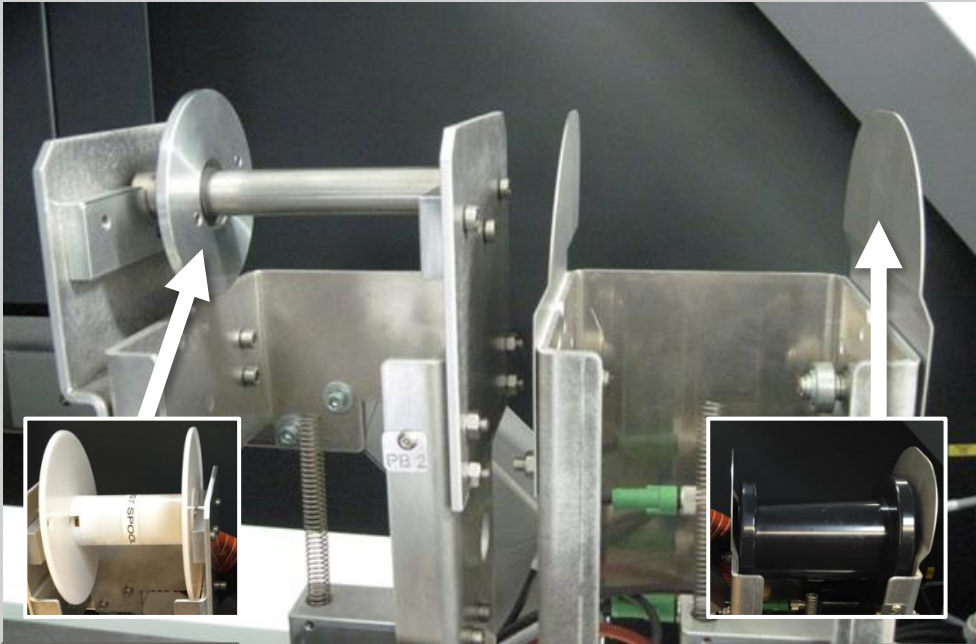
AIM PART NUMBERS 4KG SPOOL:

- ❑ SN100C: 84274
- ❑ SAC305: 84275
- ❑ SN63: 4789
- ❑ REL61: 84332
- ❑ REL22: 84333





ERSA 2MM WIRE *ONLY*



**SPINDLE
STYLE**

**ROLLER (EURO)
STYLE**

AIM PART NUMBERS SPINDLE STYLE/15LB SPOOL:

- ❑ SN63: 5465

ROLLER (EURO) STYLE/4KG SPOOL:

- ❑ SN100C: 4739
- ❑ SAC305: 4755
- ❑ SN63: 4756
- ❑ REL61: 84330
- ❑ REL22: 84331





JUKI 2MM WIRE *ONLY*



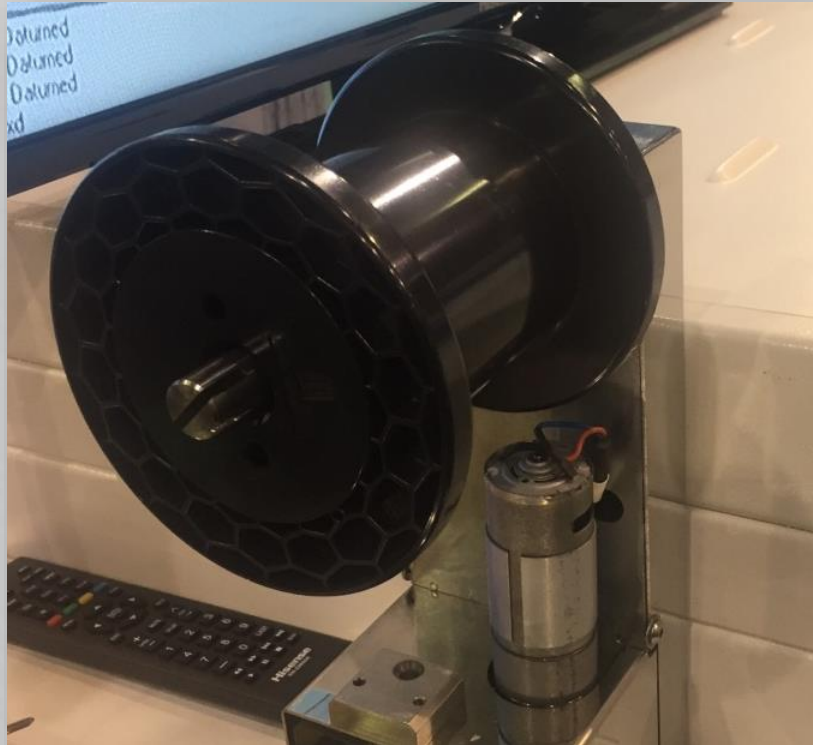
AIM PART NUMBERS 4KG SPOOL:

- ❑ SN100C: 4739
- ❑ SAC305: 4755
- ❑ SN63: 4756
- ❑ REL61: 84330
- ❑ REL22: 84331





PILLERHOUSE 3MM WIRE *ONLY*



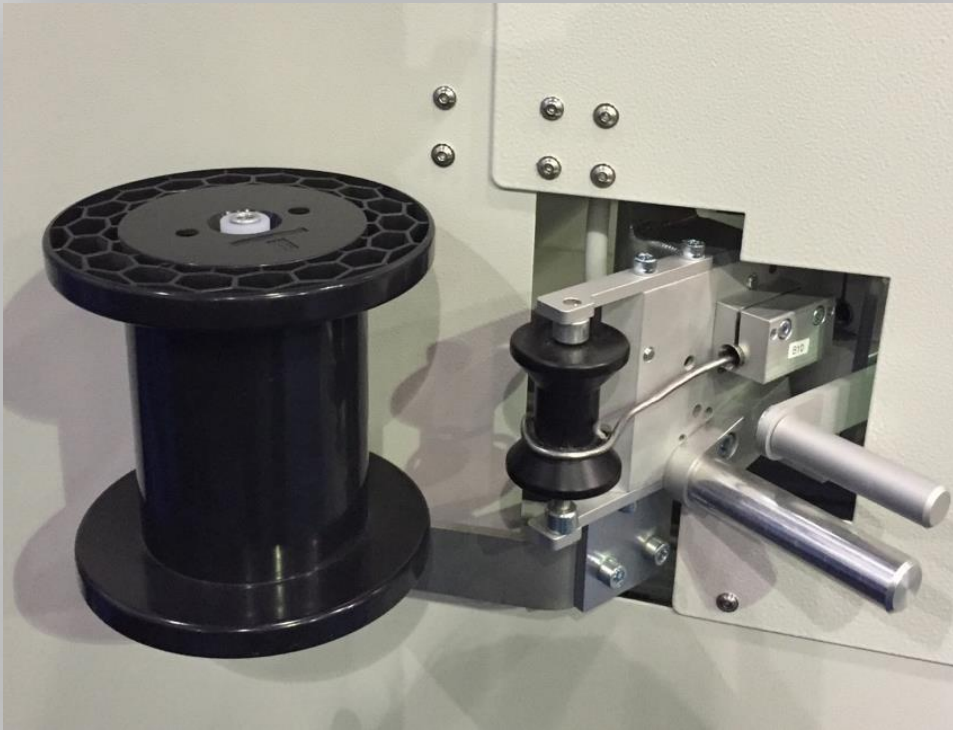
AIM PART NUMBERS 4KG SPOOL:

- ❑ **SN100C:** 84274
- ❑ **SAC305:** 84275
- ❑ **SN63:** 4789
- ❑ **REL61:** 84332
- ❑ **REL22:** 84333





SEHO 2MM OR 3MM WIRE



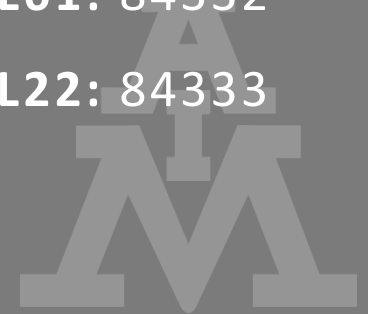
AIM PART NUMBERS 4KG SPOOL:

2MM WIRE

- ❑ SN100C: 4739
- ❑ SAC305: 4755
- ❑ SN63: 4756
- ❑ REL61: 84330
- ❑ REL22: 84331

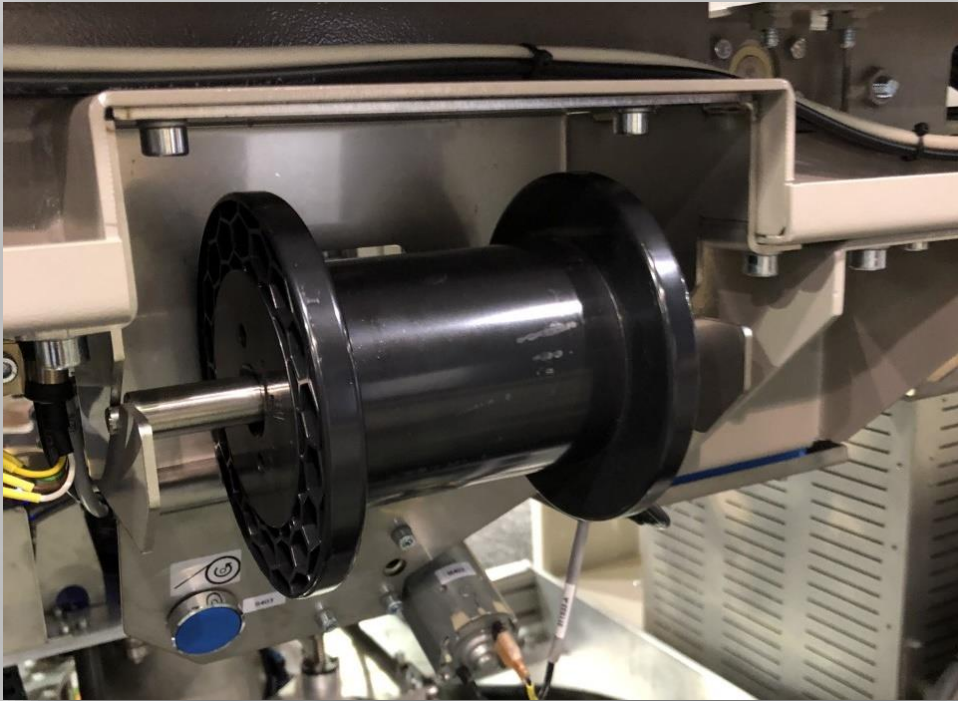
3MM WIRE

- ❑ SN100C: 84274
- ❑ SAC305: 84275
- ❑ SN63: 4789
- ❑ REL61: 84332
- ❑ REL22: 84333





VITRONICS 3MM WIRE



AIM PART NUMBERS 4KG SPOOL:

- ❑ SN100C: 84274
- ❑ SAC305: 84275
- ❑ SN63: 4789
- ❑ REL61: 84332
- ❑ REL22: 84333





THANK YOU